

Performance certified is for installation type B - free inlet, ducted outlet.
 Power rating (kW) does not include transmission losses.
 Performance ratings do not include the effects of appurtenances (accessories).

Technical Data

Impeller Data

Impeller diameter	D_r	640 mm
Number of blades	z	12
Moment of Inertia	J	2.4 kgm ²

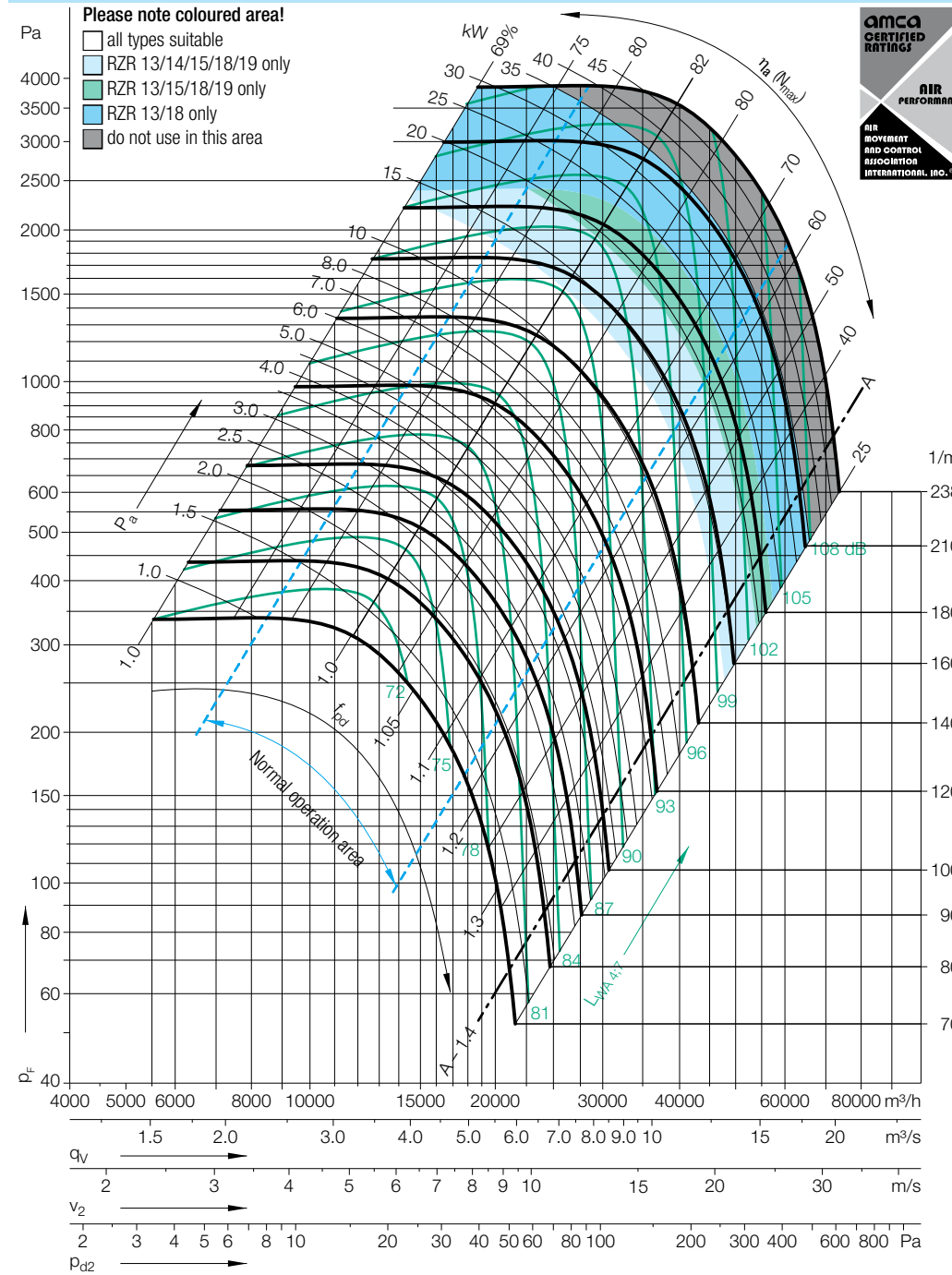
Impeller Data

Impeller weight	m	38 kg
Density of media	ρ_1	1.2 kg/m ³
Tolerance class (DIN 24166)		1

Speed limits N_{max} for ATEX execution

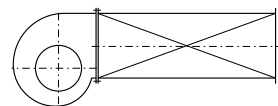
RZR 11/12/18	1367	1/min
RZR 13	2055	1/min

Performance Curves



Nicotra Gebhardt GmbH certifies that the fan shown herein is licensed to bear the AMCA Seal. The ratings shown are based on tests and procedures performed in accordance with AMCA Publication 211 and comply with the requirements of the AMCA Certified Ratings Program. The AMCA Certified Ratings Seal applies to air performance ratings only.

Measured in installation B according to ISO 5801:



Relative sound power level for inlet side L_{Wrel7} at octave centre frequencies f_c

Speed	Duty point	63	125	250	500	1000	2000	4000	8000	Hz
≤1194 1/min	≤0.8 q_{Vopt}	0	2	0	-3	-6	-9	-12	-19	dB
	>0.8-1.2 q_{Vopt}	-2	1	-2	-3	-6	-8	-14	-20	dB
	>1.2-1.6 q_{Vopt}	-3	0	-1	-3	-6	-8	-14	-21	dB
	>1.6 q_{Vopt}	-5	-3	-3	-3	-6	-7	-13	-21	dB
	>1194 1/min	≤0.8 q_{Vopt}	-2	-1	-3	-1	-6	-10	-15	-21
>0.8-1.2 q_{Vopt}	-7	-4	-5	-1	-6	-9	-14	-21	dB	
>1.2-1.6 q_{Vopt}	-10	-7	-8	-1	-5	-8	-13	-21	dB	
>1.6 q_{Vopt}	-10	-8	-8	-2	-6	-8	-11	-18	dB	

Relative sound power level for discharge side L_{Wrel4} at octave centre frequencies f_c

Speed	Duty point	63	125	250	500	1000	2000	4000	8000	Hz
≤1194 1/min	≤0.8 q_{Vopt}	13	7	4	-3	-8	-14	-17	-25	dB
	>0.8-1.2 q_{Vopt}	10	5	3	-2	-7	-13	-17	-25	dB
	>1.2-1.6 q_{Vopt}	7	2	2	-2	-6	-12	-18	-27	dB
	>1.6 q_{Vopt}	5	1	1	-2	-6	-10	-17	-27	dB
	>1194 1/min	≤0.8 q_{Vopt}	11	4	2	0	-7	-12	-17	-24
>0.8-1.2 q_{Vopt}	7	1	-2	-3	-6	-10	-15	-23	dB	
>1.2-1.6 q_{Vopt}	3	-2	-4	-3	-5	-9	-14	-23	dB	
>1.6 q_{Vopt}	2	-3	-5	-3	-5	-9	-12	-21	dB	